

# SATELLITE RESILIENCE FOR CRITICAL COMMUNICATIONS

## High-throughput, secure and flexible SATCOM to ensure seamless connectivity in an unpredictable world

Dependence on secure and reliable connectivity is becoming ever greater, with an expectation for high-bandwidth collaboration tools, internet access, cloud apps and services, remote systems monitoring and control, and remote data storage. In parallel, threats to connectivity have increased. Terrestrial fibre breaks, both on land and under the sea, cyber and DOS attacks, power outages affecting core networks, and bugged cybersecurity software updates have all disrupted communications bearers in the past year.

In a connected but unpredictable world, Avanti helps you mitigate organisational risk through turnkey resilience planning:

- Managing risk and ensuring business continuity
- Designing and delivering a successful PACE plan
- Complying with regulations and legislation
- Navigating the wide range of connectivity options available



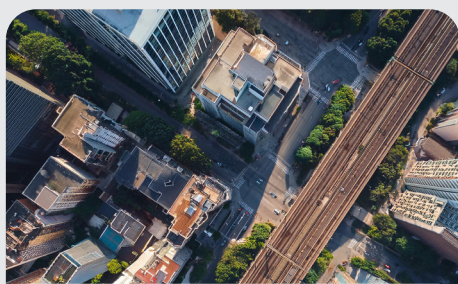


# WHY USE AVANTI FOR YOUR ORGANISATION'S COMMUNICATIONS RESILIENCE?

Avanti's satcom services and solutions ensure that you have the connectivity you need when you need it most. Avanti has over a decade of experience delivering secure communications resilience to a wide range of critical users, including:

- Armed forces
- First responders
- Government departments
- Crisis response & disaster relief
- Banking & commerce
- Primary industries
- Energy distribution
- Telecommunications

## WHAT MAKES US DIFFERENT?



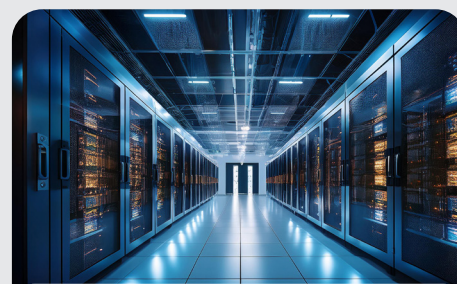
### Resilience Planning

Selection and implementation of secondary bearers for resilience planning conforming to the principles of feasibility, suitability, distinguishability and reliability.



### High-Throughput Steerable Beams

For resilience requirements of strategic importance, Avanti achieves dedicated Gbps of bandwidth to ensure connectivity through attacks on core networks, power outages and terrestrial fibre breaks.



### Scalable Data Pooling

Creating economies of scale by delivering pooled capacity and terminals in one service plan, with full monitoring and management of the network through a single portal.



### Power Solutions

Leveraging experience as the leading satellite communications provider in remote and off-grid environments, Avanti has a wide range of power solutions to ensure that when the lights go off, your connectivity stays on.



### Multi-Orbit Toolbox

Each orbit and frequency band has its advantages and limitations. Avanti helps you navigate the options and choose the best fit for your organisation's priorities: whether the secure data routing and dedicated bandwidth of GEO or the low latency of LEO.



### Hybrid Architectures

Some networks require a diversity of bearers to fulfil all requirements. Avanti delivers hybrid architectures controlled by a software defined wide area network – allowing you the best of all worlds. Data is routed based on the most appropriate bearer for its data type and priority.